



# OTDR for SABER



## Pluggable OTDR for Saber platform

The Smart SFP+ OTDR (Optical Time Domain Reflectometer) is a pluggable unit, enabling SABER-4400 platform to test optical fiber links, detect faults, measure fiber, splice and connector losses, total span loss and cable length.

## Features & Benefits

- + Compact SFP+ format
- + Measure fiber links up to 128km
- + Hot pluggable in several Saber modules.
- + GR-3108 OSP Class 2 compliant while in Saber modules/platform
- + Integrated with DZS Xtreme OEO/SDN-C
- + Support exporting in SOR (Standard OTDR Record) data format. (Telcordia SR-4731)

The pluggable OTDR offers an optional and compact solution for measuring optical links where SABER-4400 is deployed. The OTDR can be inserted in front panel SFP+ slot of SABER-4400 modules such as RDM-4400, OFA-xx20 etc. When operated into SABER-4400 modules the OTDR is hardened and GR-3108 OSP Class 2 compliant.

The pluggable OTDR can be managed with the embedded OSM-4400 GUI and WILL integrate into the DZS Xtreme Optical Edge Orchestration Platform.

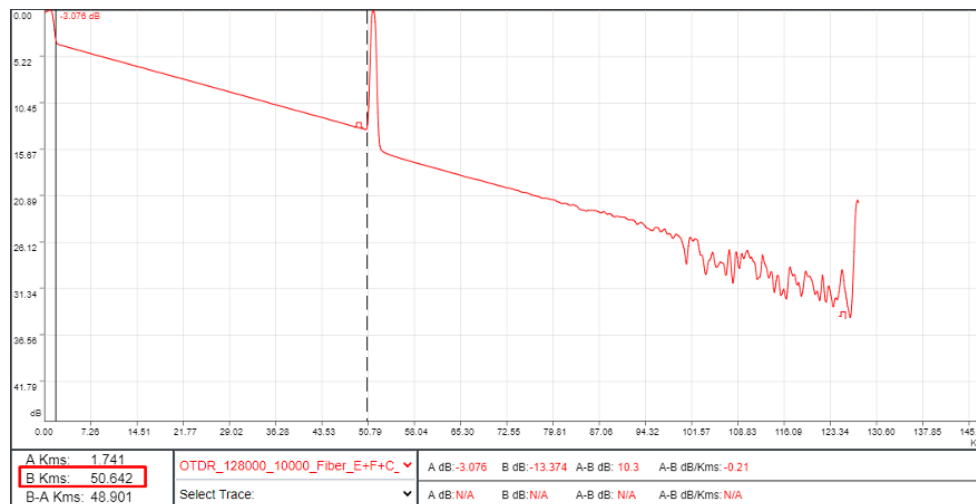


Pluggable OTDR for Saber platform

# OTDR for SABER

## Product Specifications

| Specification                 | Attribute   |
|-------------------------------|---|
| Platform Dimensions           | SFP+ pluggable format   |
| Wavelength, nm                | 1611 (typical)  |
| Optic Ports                   | LC  |
| Management Support            | DZS Xtreme, OSM-4400, (CLI, SNMP, NETCONF/YANG, GNMI)                 |
| Distance range, km            | 2, 5, 25, 50, 100, 128  |
| Pulse Width, ns               | 10 to 20000   |
| Dynamic range, dB             | 30 max  |
| Loss Measurement accuracy, dB | +/- 0.1dB   |
| Operating Temperature         | -40° to 65° C (-40° to 149° F)<br>when inserted in Saber-4400 chassis |
| Operation Humidity            | 5-90, %RH   |
| Storage Temperature           | -40 to 85°C   |
| Storage Humidity              | 5-95, %RH   |





Pluggable OTDR for Saber platform

# OTDR for SABER

## Supported Sleds/Modules

| Supported Sled Family | Description   |
|-----------------------|---|
| 1032-5700             | RDM-4400, 2D CD FLEX ROADM, 3 qtr width sled                  |
| 1015-6629             | OFA-1720-D, 17dB Output Max, 20dB Gain - Dual amp - in REL8.3 |
| 1015-6631             | OFA-2020-D, 20dB Output Max, 20dB Gain - Dual amp - in REL8.3 |

## Ordering Information

| System |           |
|--------|-----------|
| OTDR   | 1006-4202 |

**DZS Headquarters**  
Plano, TX USA  
[info@DZSi.com](mailto:info@DZSi.com)  
[www.DZSi.com/contact-us](http://www.DZSi.com/contact-us)